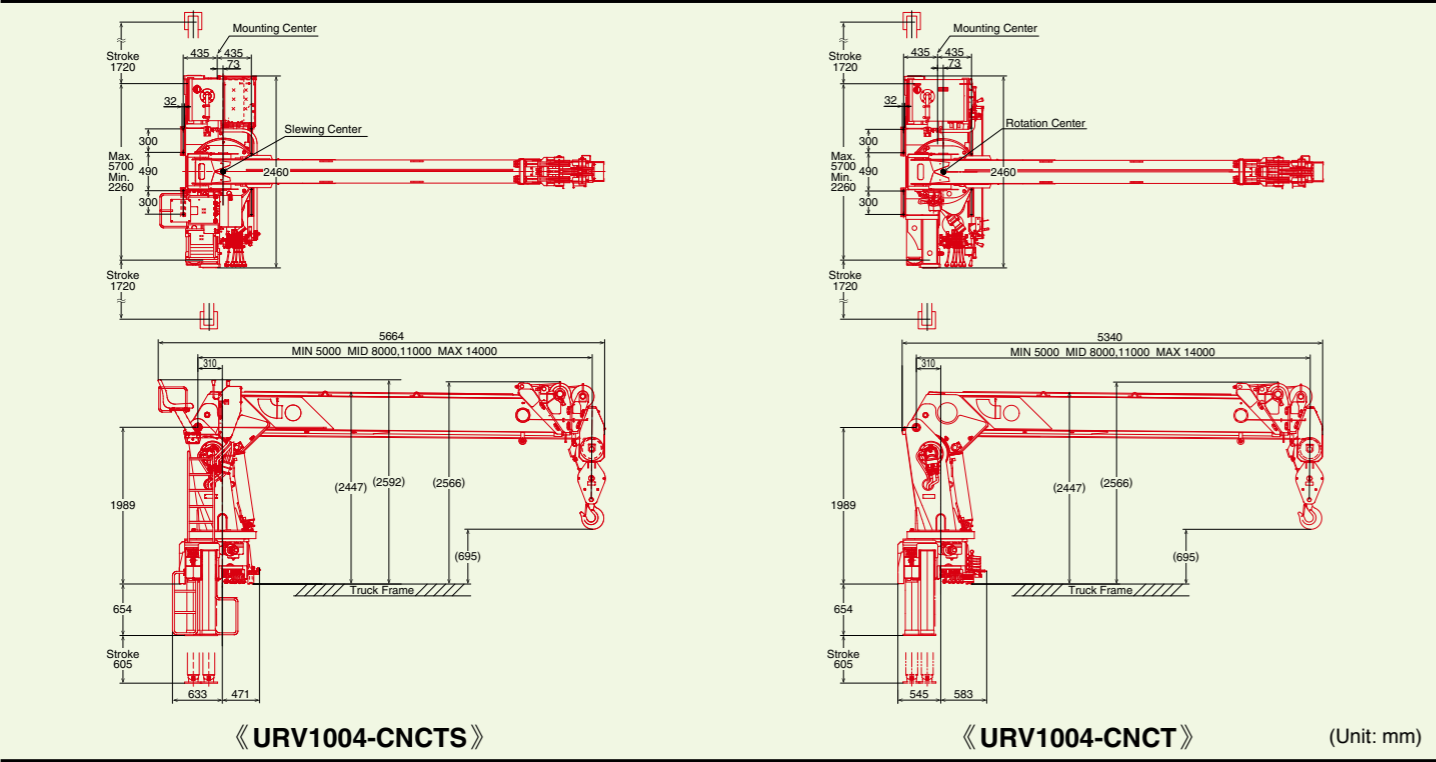


Specifications Table

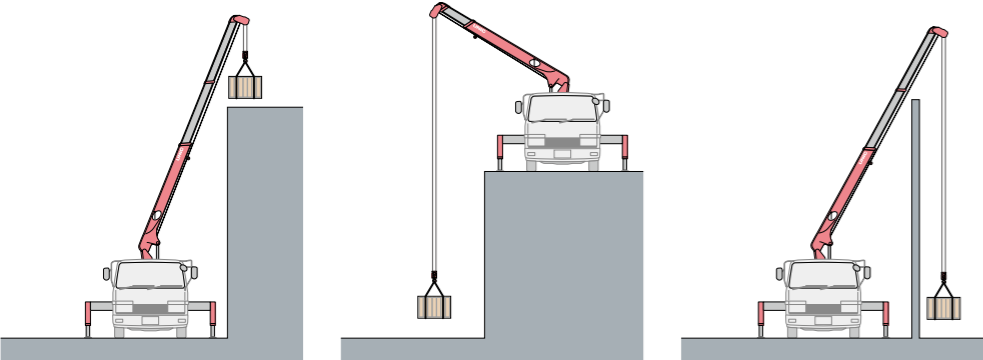
Crane Model	URV1004
Maximum Lifting Capacity	10,100kgx2.5m
Maximum Hook Height	15.6m
Working Radius	Min. 0.95m~Max. 13.69m
Boom Length	Min. 5.0m~Max. 14.0m
Boom Sections	4
Boom Raising Angle	Min. -0.6°~Max. 78°
Slewing Angle (Continuous)	360°

Crane Mounting Dimensions



Operational advantages...

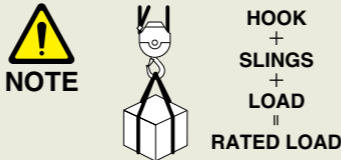
High or low tight, UNIC straight-boom wire-rope cranes match the task. They're great high-lift performers, Lifting loads over walls is also no problem with their unrestricted raising and lowering. In deep-hole jobs they're strong, and accurate. Many extra safety features, too.



Buildings, walls, whatever, with UNIC wire-rope cranes you get precise high-lift placement and safe, sure operation. Their dependability is all in their strength and design, original UNIC features.

Higher performance, too, at lower depths. UNIC wire-rope cranes handle heavy loads in deep-hole jobs with accuracy and stability. A wide range of models assures versatile matching to job requirements.

Tight places are the right places for UNIC wire-rope cranes. In any operating situation their strong steel cables mean extra dependability and safety. High, low, or tight, UNIC wire-rope cranes are always right.



1. Rated loads shown in the chart are based on the crane strength with the outriggers fully extended on a firm level ground and on the actual working radius including the deflection of boom.
2. The weights of hook (100 kg.), slings, and any accessories attached to the boom or loadline must be deducted from the above capacities in the chart.
3. Capacities shown must reduce in accordance with vehicle weight and loaded condition of truck, crane mounting position, and operating speed.
4. The figures in relation to the speed are on the basis of no-load running at rated oil flow conditions.
5. In accordance with our policy of constant product improvement, all specifications are subject to change without notice or obligations.

FURUKAWA UNIC CORPORATION

6-4, Otemachi 2-chome, Chiyoda-ku, Tokyo, 100-8370, JAPAN
Phone: +81-3-6636-9525
<https://www.uniccrane-global.com/>

Authorized **UNIC** distributor

UNIC

Truck-Mounted UNIC Crane

URV1004-CNCT Series

For Heavy-Duty truck

Maximum Lifting Capacity
10100 kg



FURUKAWA UNIC CORPORATION

UNIC Crane——, High safety and reliability.



Automatic Hook Stow System

Hook can be automatically retracted to stow position and released for lifting operation.

Anti Two-Block System

A limiting device to prevent the hook from contacting the upper sheaves.

Interlock System for Slewing

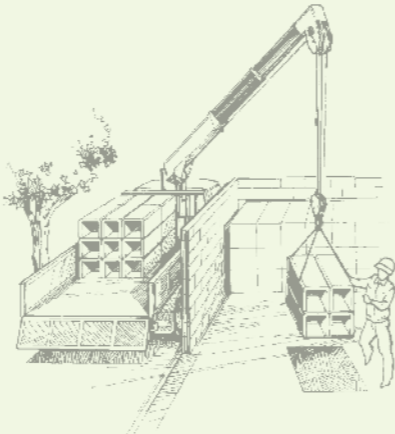
Slew motor is hydraulically interlocked when in no use to prevent the crane from swinging when the truck is traveling.

Maximum Lifting Capacity	10100kg
Maximum Hook Height	15.6m
Maximum Working Radius	13.69m

NOTE: Top Seat-Control Version

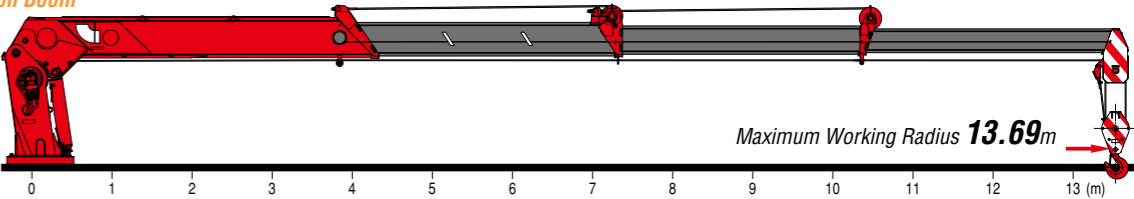
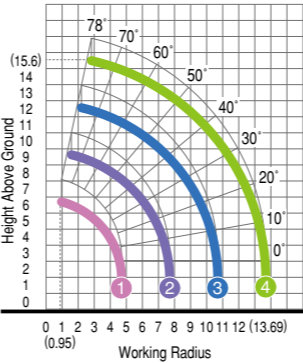
Wide Horizontal Extension

Main Outrigger Max. (Hydraulic Extended)	5700mm
Rear Outrigger Max. (Hydraulic Extended)	3200mm



URV1004 4 Section Boom

Working Range (m)



Rated Loads (kg)

Working Radius (m)	0.95~2.5	2.7	3.0	3.5	4.0	4.5	5.0	5.5	6.0	7.0	8.0	9.0	10.0	11.0	12.0	13.69
1	10100	9100	8400	7250	6350	5300 (4.69m)										
2	6600	6600	6600	6000	5300	4700	4300	3850	3600	3100	2700 (7.69m)					
3			5300	5300	4600	4100	3700	3400	3100	2700	2300	2000	1800	1600 (10.69m)		
4			4100	4100	4100	4100	3700	3400	3100	2700	2300	2000	1800	1600	1300	1000

Select Control Type



Top Seat-Control Version
《URV1004-CNCTS》

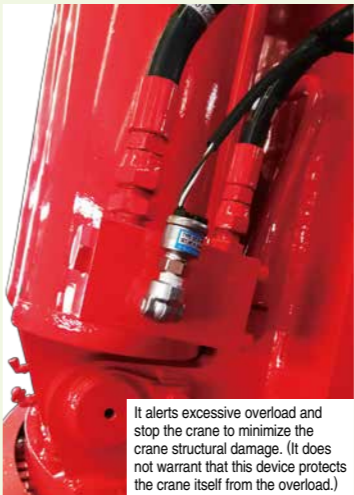


Base-Control Version
《URV1004-CNCT》

Standard Equipments



Outrigger Control from Base



Derrick Cylinder Pressure
Alert System



Oil Cooler
(with Thermostat)